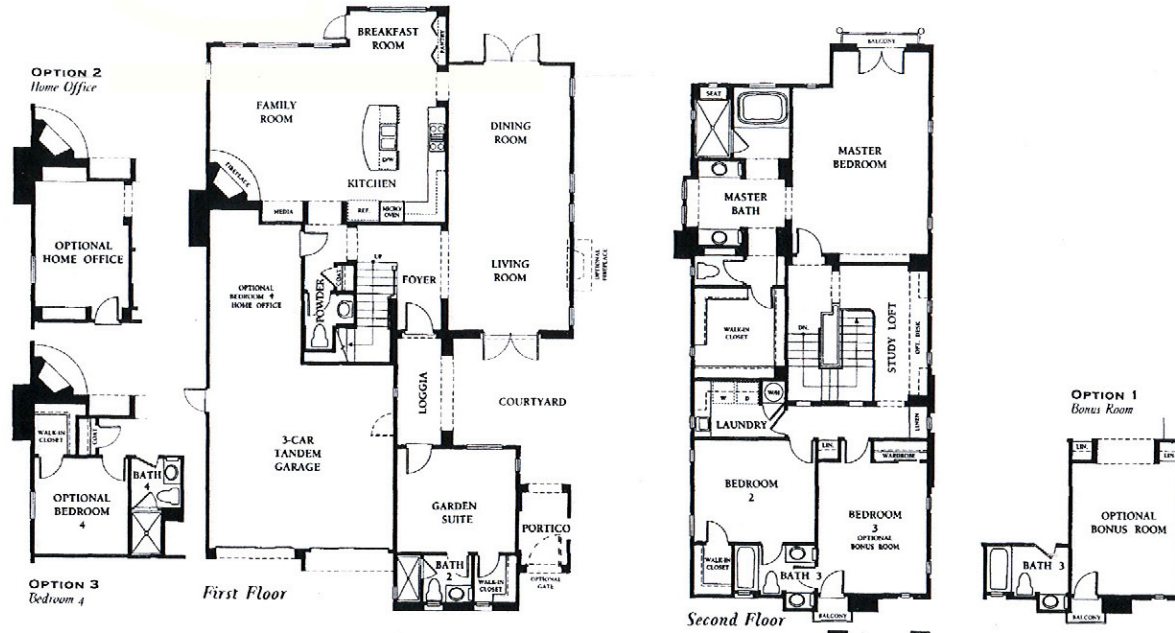


Bontanica MODEL: B Plan 2 - 2778 Sq.Ft. Sq.Ft. (Approx)



- APPROXIMATELY 2,778 SQUARE FEET
- TUSCAN COUNTRY OR FRENCH PROVENCAL ARCHITECTURE
- TWO STORY
- ENTRY PORTICO OPENING TO SECLUDED COURTYARD WITH COVERED LOGGIA
- COMBINATION LIVING AND DINING ROOMS
- SPACIOUS FAMILY ROOM
- GOURMET KITCHEN WITH ISLAND AND BREAKFAST ROOM
- FOUR BEDROOMS (INCLUDING DETACHED "GARDEN SUITE" BEDROOM WITH PRIVATE ENTRANCE)
- THREE AND ONE-HALF BATHS (UP TO FIVE BEDROOMS AND FOUR AND ONE-HALF BATHS WITH OPTIONS)
- STUDY LOFT
- OPTIONAL HOME OFFICE
- OPTIONAL BONUS ROOM
- OPTIONAL BEDROOM
- THREE-CAR TANDEM GARAGE